

Contents

| Title | Author | Page |
|---|------------------------|-------------|
| Articles | | |
| How using a Heat Pump can help us in going carbon neutral | Tony Jordan | 11 |
| Looking for bears in Romania's Carpathian Mountains | David Thomas | 10 |
| New to Donkeys | Joss Goodchild | 20 |
| Turned wood items from the Jubilee tree | Nick Acklam | 5 |
| Anglesey Abbey | Chloe McMath | 8 |
| Bottisham and Burwell Photographic Club | Elliot Needham | 14 |
| Bottisham Village College Adult Learning | | 7 |
| Burwell and Reach Car Scheme | | 18 |
| Burwell Museum and Windmill | | 19 |
| Burwell Museum Coach Trips | | 8 |
| Bus Timetable | | 35 |
| Cambridgeshire Fire and Rescue | | 18 |
| Church | | |
| Lunchbreak Cafe | Pat Chalmers | 26 |
| Church Services and Events | | 34 |
| Letter from the Vicarage | Eleanor Williams | 26 |
| Contact Information | | 36 |
| Diary Dates | | 33 |
| Dyke's End | Mel Longfoot | 22 |
| Events Team | Debbie Quilter | 6 |
| Food Focus | Catherine Gibson | 22 |
| IT Advice | David McMillan | 24 |
| Metal Detecting | Luke Mercer | 21 |
| Neighbourhood Plan | Nick Acklam | 5 |
| Neighbourhood Watch | Kevin Evans | 15 |
| Out and About | Joss Goodchild | 16 |
| Parish Council | | |
| Grant Fund | | 27 |
| Know your District Councillors | | 27 |
| Know Your Parish Council | | 27 |
| Meeting Minutes | | 28 |
| Village Update | Alex de Giorgio-Miller | 3 |
| Rosanna's Ramblings | Rosanna Moseley Gore | 12 |
| Snakehall Farm | Liz Pitt | 13 |
| Sport and Recreation | | |
| Reach Riders | | 9 |
| Tales from a Reach Garden | Danuta Gibson | |
| Then and Now | Chris Patterson | 36 |
| Wicken Fen | Julia Hammond | 9 |

From the Editor

The sad news we now have is that a date has been set for the removal of our Jubilee Tree which was planted in 1935 to celebrate the Silver Jubilee of George V.

The date set for its removal is Wednesday 19th February, so the tree is in its 85th year.



George V – born in 1865, died in 1936

It'll be a real shame to see it go but this action, taken because of safety concerns, will allow the new tree, which is a sweet chestnut, to grow more quickly.

Within this issue you see that the organisation of the Fair is going well and Claire is now looking for people who will help, either between now and the Fair or on the day – have a look at pages 3 and 25.

The Parish Council has two vacancies and is looking for people to fill those spaces. So if you are interested, have a look at what is required, page 4 and then get in touch with Susan Bailey if you are interested.

Finally, if you are in the habit of using your mobile phone to take pictures, check out Elliot Nedham's article on page 14.

David Parr
davidmparr@btinternet.com or 07887 563720

Cover Picture:

The tree in its prime – this picture was taken on the 10th of May 2009

About the Magazine

The purpose of *Within Reach* is to serve the whole village by circulating information and interesting articles free to every household. Additional copies are available at a charge of £2.50. Issues are published bi-monthly covering the months of Feb/Mar, Apr/May, June/July, Aug/Sept, Oct/Nov and Dec/Jan.

Copies of *Within Reach* magazine and its predecessor *Out of Reach* can be found on the village website www.reach-village.co.uk. The next copy date is 15th March 2020. This magazine (which is fully funded from advertising) is approved and printed by Reach Parish Council.

The Team

| | |
|----------------------------|---|
| Editor | David Parr |
| Distribution | Freda Lloyd, Claire Halpin-McDonald and Grahame Radford |
| Photographer | Rosanna Moseley Gore |
| 24Acres | David Thomas |
| Cookery | Catherine Gibson |
| Cricket | Ross Clark |
| Events Team | Debbie Quilter |
| Gardening | Danuta Gibson |
| IT Advice | David Macmillan |
| Parish Council | Alex de Giorgio-Miller |
| Reach Riders Group | Sue Cameron |
| Rosanna's Ramblings | Rosanna Moseley Gore |
| Snakehall Farm | Liz Pitt |
| Then and Now | Chris Patterson |
| Wicken Fen | Julia Hammond |
| Wildlife | Joss Goodchild |



Picture courtesy of Penny Greenhill

Village Update

Playground

Despite the more recent snap of cold weather, my kids are still loving the playground. And it seems like we're not the only ones – there are always plenty of other children for them to play with!



It's great to see the equipment being well used by the community and all the children out having fun in the fresh air. We are aware that one piece holding the climbing net on the large climbing frame is missing – this isn't critical and a replacement part is being organised – but if you do see anything else amiss then please do report it to the clerk (clerk@reachparishcouncil.org) so that we can make sure it gets looked at.

Bus Shelter spruce up!

Regular bus users will have seen how overgrown and unloved the bus shelter on the green had become. A huge thank you to David Pallant of Multitrade, based in the village, who has kindly completed the repair work for us and given it a coat of stain in his spare time. We are very grateful and now it looks great!



Horse Chestnut tree

Thank you all for your comments on the future of the large horse chestnut tree on the green. For those who haven't caught the previous articles on this, we reported that our wonderful horse chestnut tree on the green now has many dying branches which must be removed as they pose a risk to safety. The Parish Council sought advice from the Trees Officer at ECDC and a highly qualified tree surgeon on the best course of action and it was decided that the tree should be felled, which will allow the replacement tree to grow.

We are awaiting planning permission for this currently, but we anticipate that the work will be completed before the end of February. Some of the branches will be moved to the 24Acres to provide ecology heaps for wildlife and Nick Acklam has kindly organised with the Ely Guild of Woodturners that some of the core of the trunk will be saved and seasoned with the intention of producing items for sale to villagers. There will be future communications about these when the details are worked out!

Vacancies on the Parish Council

There are currently two vacancies on the Parish Council. If you care about our village and want to make a difference in the local community then please contact the clerk (clerk@reachparishcouncil.org) to join us!

Alex de Giorgio-Miller

Chair – Reach Parish Council

a.degiorgiomiller@reachparishcouncil.org

Reach Fair

The preparations for Reach Fair go well and some early planning has allowed us to book some super acts: we have dance troupes, gymnasts, a martial arts display, music bands etc. Coinciding with the VE Anniversary we have singer Kate Garner, Lindy Hop dancers and displays of 40s memorabilia – so start stitching your bunting.



The next **Reach Fair Committee Meeting** is on **Tuesday 11 February at 8pm in the Village Hall** and here we are looking for people to turn up with offers of help nearer the time and on the day of the Fair.

Come along to the meeting and show your support or at the very least contact us to let know you are happy to assist by contacting the committee members below.

Alex de Giorgio-Miller

a.degiorgiomiller@reachparishcouncil.org

07771 348013

Claire Halpin-McDonald

claire.halpin@ascontracts.co.uk

07834 740881

MAKE A CHANGE BECOME A LOCAL COUNCILLOR

WHAT DO LOCAL COUNCILS DO?

Your local council has an overall responsibility for the well-being of your local community. Their work falls into three main categories:

- Delivery of services
- Improve quality of life for residents
- Give communities a democratic voice

BECOMING A LOCAL COUNCILLOR

As a local councillor you can become a voice for your community and make a real change. Councillors are community leaders and represent the interests of the communities they serve.

Local councillors have three main responsibilities:

- Decision-making
- Monitoring
- Getting involved locally

GETTING ELECTED

To stand for election to a local council you must:

- Be a UK or Commonwealth citizen; or be a citizen of the Republic of Ireland; or be a citizen of another Member State of the European Union
- Be at least 18 years old
- Be an elector of the local council; or in the past 12 months occupied land or other premises in the area the local council serves (as owner or tenant); or work in the area local council serves (as your principal or only place of work); or live within three miles of the local council boundary.

If you are interested contact the council on:

clerk@reachparishcouncil.org

www.nalc.gov.uk/elections

Turned Wood Items from the Jubilee Tree

No doubt you have read with sadness that the Jubilee Horse Chestnut on Fair Green is dying and is to be felled. Its loss after 85 years will be keenly felt.

However we may be able to lessen the blow a bit. If, on felling, the timber of the tree is found to be suitable, Ely Guild of Woodturners

<http://www.elyguildofwoodturners.org.uk/> will take some of it and, once seasoned, turn it into a variety of items including bowls and pens. The images below show some of the products of the Guild. Prices will range from about £15 for a pen to about £60 for a larger bowl.



Residents of Reach will have first call on the products from the Jubilee tree. I have agreed with the Guild to produce a list of villagers interested in buying an item. It is possible that demand will outstrip supply so I will be operating on a 'first come, first served' basis, initially limiting purchases to one item to give every household in the village the chance to acquire a bit of our heritage. If you are interested please email me with your details, a limit on what you are prepared to pay, the type of item you are looking for and an indication of whether you are interested in purchasing two or more items should supply allow it.

Neighbourhood Plan

By the time you read this the Neighbourhood Plan Project Group will have delivered 270 surveys to villagers. Let me know if you haven't received a survey at all or enough copies for every over-16 in your household. Please do take the time to complete and return the survey which should take no more than 20 minutes. I know that we live in a world where everybody wants to survey your opinion, but your views really do count and will make a difference in shaping how Reach evolves.

The Neighbourhood Plan's strength will come from its evidence base and the survey returns form a key part of that base. We need returned, completed surveys by 14 February so that we can crunch the data and begin to draft the Plan. We will share a summary of returns when we can and will shortly circulate details of a forum to gather the views of under-16 residents.

Landscape Appraisal

On 16 December the Group tasked Alison Farmer, a landscape architect, to undertake a landscape appraisal in support of the Plan. Members of the Group, including Ian Poole, our town planning consultant and a few Reach residents, had a productive and wide-ranging discussion with Alison on the way in which the landscape of our neighbourhood should and would influence our Plan. This was followed by a walkabout. We expect some preliminary findings from Alison in the very near future.

Design Code

On 2 January the Group met with Jimmy Lu and Hoorieh Morshedi of AECOM to initiate a design code for the Plan. The design code will articulate principles to ensure that new development and refurbishment of existing buildings in Reach reflect local identity, reinforce the sense of pride we have in our village and work well for villagers' needs now and into the future. The Group gave a comprehensive brief on:

- why the built environment of Reach is as it is
- what, on the basis of our engagement with villagers to date, is most liked and valued in Reach's buildings and layout
- other strands of our work, including the landscape appraisal and the residents' survey, which will dovetail with the design code in the overall Plan.

The briefing was followed by a short walkabout in the centre of the village. We expect a draft design code to be delivered in a couple of months time.

We will be pulling the three above mentioned strands of work together to form chunks of the draft Plan and will present these at a drop-in session in the village hall at some time in the spring.

The Hythe

There has still been no response from Anglian Water to our proposals to improve the recreational and environmental benefits of the Hythe following what we gauged to be a positive meeting on 5 September 2019. At the NP Launch events last summer, more villagers wanted to see improvements to the Hythe than any other remedial action in the village. We expect a similar response in the survey returns so we will continue to chase the utility company and are considering next steps.

Nick Acklam

Chair Reach Neighbourhood Plan Project Group

Events Team

I am so glad that on these drizzly, gloomy days of winter I get to opportunity to think and plan ahead for sunny days and fun events. As a team we have scheduled in a number of events but if you would like to run others and need a hand just ask, we'd love to help.

A big thank you to all the made our Christmas events such success. I think you'll agree that no matter what age you are there was something for you in Reach this Christmas.



At our last team meeting we took a trip down memory lane as we planned the village VE Day event. Take a look at the photos of past celebrations by looking at the website, perhaps start here: www.reach-village.co.uk/news_diamond_jubilee_garden_party_2012.html - one example is below . . .



Looking forward we are planning . . .

VE Day celebrations

Friday 8th May 2020 (Bank Holiday)

There will be a Garden Party during the afternoon, with music of the era and the beacon will be lit toward the end of the celebrations. More details to follow.

Reach Fair

Sunday 10th May

If you are able to offer help, either before or during the event, please get in touch with Claire or Alex on the team claire.halpin@ascontracts.co.uk, a.degiorgiomiller@reachparishcouncil.org

Reach Sports Day

Sunday 5th July

The usual fun of watching the children expel their energies and sharing in a barbecue afterwards.

Car Boot Sale

Sunday 13th September

We are hoping to build on the success of last year's event, spread the word to family and friends, this is the day to bag a bargain in Reach.

Village Advent Calendar

December 2020

An idea put forward where window displays are revealed across the advent period. Watch this space for more information and get in touch if you would like to take part. We will be needing a number of volunteers.

Christmas 2020 Dates

| | |
|----------------------------|----------------------------|
| Christmas lights switch-on | Sun 6th Dec |
| Seniors Christmas lunch | Wed 16th Dec |
| Christingle service | Sun 20 th Dec |
| Carols around the tree | Thurs 24 th Dec |

We're always keen to hear ideas from villagers – the Senior's Lunch, which has become such a success, came from a suggestion from Ann Jennings for example. To aid this, we will be putting a poll on Facebook to try and gather suggestions.

Our **Village Tea Towels**, in three different colours, have been selling really well. We do have some left (we purchased enough to last through this year). Pricing is £4.00 each, £7.50 for 2 or £10.00 for 3.

If you like to buy some, please let David Parr know on 07887 563720 or davidmparr@btinternet.com

Debbie Quilter



Bottisham Village College

Adult Learning

New Courses for the Spring include:

Tango Salon Dancing – Beginners (starts 5 February)
Vegetarian Indian Cookery (starts 27 February)
Creating Glass Jewellery (starts 5 March)
Quick and Easy Italian Cookery (starts 30 April)

Saturday Workshops on 29th February include:

Cook with Your Kids
Digital Desktop Photography (Still Life)
Glass Bracelets, Rings and Brooches
Stained Glass Colourful Suncatchers
Vegetarian Indian Delights (Cookery)

Saturday Workshops on 28th March include:

Dressmaking Workshop
Quick and Easy Indian Cookery
Reactive Glass Jewellery
Spring Flowers in Acrylics
Springtime Flower Arranging
Yoga Workshop

Would you like to suggest a course?

We are always looking for new ideas, so if you would like us to provide a course which is not offered, or you have skills you would like to teach to adults, please let us know.

www.bottishamvc.org/adultlearning

Tel: 01223 811372 Email: adultlearning@bottishamvc.org

Facebook: [BottishamAdultCommunityLearning](https://www.facebook.com/BottishamAdultCommunityLearning) or Twitter: [@CommunityEdBo](https://twitter.com/CommunityEdBo)

Anglesey Abbey



Thank you all so much for your support in 2019. Every cup of tea drunk, plant purchased, hour of time gifted, donation made, membership started or renewed, and entry ticket bought help us to look after Anglesey Abbey, and other special places like it forever.

To help ensure that more of you, your friends and families, can experience some well-deserved rest and relaxation at Anglesey Abbey we're pleased to announce we'll be freezing our entry prices for non-members for 2020 and introducing three off-peak months: January, June and November. We'll also be continuing our community partnerships and access schemes that enable families and individuals who may not usually be able to visit us to do so for free, through partnering with new and existing support organisations.

Snowdrop Season

Snowdrops herald the first signs of spring and they're beginning to pop up around the estate. Anglesey Abbey has one of the finest specialist collections in the country, including 20 varieties that have been discovered on the estate.

Go behind the scenes and discover our private collection on our exclusive Specialist Collection Tours. Make the most of these exclusive weekday tours where you'll see our renowned snowdrop collection, with over 300 varieties. These exclusive tours are led by a member of our garden team, sharing their specialist knowledge. Pre-booking is essential to secure your place, for dates, further information and to book, head to our website.

Winter Garden

Amongst the hustle and bustle of daily life, there are multiple pockets of peace to be found in places all around us. This winter, come and experience the sensory Winter Garden, designed to commemorate the centenary of Lord Fairhaven's birth in its 21st year, by having a go at our mindfulness trail. Pick up a Mindful Meander from Visitor Reception next time you visit, in it we've highlighted the top spots to take in your surroundings and use your senses to experience the tranquil and sensory qualities of the Winter Garden.

Also available to pick up at the start of the route is our new Winter Plant Guide, highlighting some of our top plants, both original and some of the newly planted ones, in the garden as well as some of our favourite snowdrops and the stories behind them. (Suggested donation 50p).

Discover the House

From 13th century priory to 20th century home, uncover A History of Anglesey Abbey in 10 Objects. Discover how Anglesey Abbey transformed from a monastic priory to a gentleman's home through ten unique objects. Each object has been carefully selected to tell a story of Anglesey Abbey, from a portrait of Henry VIII to a musical, 18th century clock.

Chloe McMath

Senior Visitor Experience Officer

Burwell Museum Coach Trips



| | | |
|-----------------------------|---------------------|-----|
| Tues 24 th March | Kings Lynn | £16 |
| Thurs 21 st May | Lowestoft | £23 |
| Sun 14 th June | Rochester Dickens | £23 |
| Tues 14 th July | Wroxham Boat Trip | £30 |
| Fri 7 th August | Hunstanton | £18 |
| Sun 20 th Sept | Sheringham 40's Day | £21 |
| Thurs 15 th Oct | Norwich | £18 |

Our **Brick Lane Christmas Show and Dinner** will take place on Friday 27th November and cost £74.50.

Tickets are on sale at Tina's North St, Burwell or ring Barbara on 01638 741581 or 07887 712296



Wicken Fen



Sunset on the Sedge Fen by Glynis Pierson

Visiting the reserve in the afternoon and early evening can be especially rewarding at this time of year. In addition to the possibility of seeing a stunning fen sunset, both hen and marsh harriers can be seen coming into roost on the Sedge Fen from the Visitor Centre window, the Boardwalk hide, or the viewing platform. If you'd like to find out more about wetland wildlife, why not join us for our World Wetland Day Walk on Sunday 2 February, see our weblink below for full details.

We're thinking about the new season ahead and making plans for all the work that needs to be done to keep the reserve running smoothly, whether that's greeting visitors, cutting grass, or helping in the office. We'll be recruiting new volunteers for various roles at Wicken Fen soon. Our Volunteer Recruitment event will take place on Sunday 1st March, so keep the date and watch out for more details closer to the time.

The café expansion project is going well. We're still on track to reopen in mid-February with a bigger, better building and a wider range of refreshments. In the meantime, we're still offering hot and cold drinks, light bites and cakes and bakes from Doris our mobile café. Don't forget that if you bring your own reusable cup, we'll use less compostable cups and we'll give you 25p off the cost of your drink. Keep an eye on our social media channels for the launch date of the new café.

The first school holiday of the year is fast approaching. Our February half term activities include Wintry Wild Art on Wednesday 19 February and Geocache Challenge on Friday 21 February. We'll also have bikes to hire if you fancy a family bike adventure and drop-in fun activities in the Visitor Centre.

Our adult events include 'The Wild Remedy', an evening with author Emma Mitchell exploring the link between nature and wellbeing (12 March), Fenland Landscape Watercolour Workshop (14 March) and Introduction to Mindful Birdwatching course (25 April, 2, 9, 16 May). See <https://www.nationaltrust.org.uk/wicken-fen-nature-reserve/whats-on> for more information.

Julia Hammond

Reach Riders

We have lots planned for the year and a recent festive ride to the No Hurry between Christmas and New Year proved good fun for those taking part. The weather was kind, even with a bitter wind



We are hosting a pie and pint night at the Dykes End - it has been massively subscribed and we hope to raise a good amount from the raffle

Amongst other things we hope to host a very interesting talk from the local horse hospital - details to follow, but looks to be of great interest to those in the market, or selling horses in the near future.

Sue Cameron
ewenandsue@btinternet.com

If you go into the woods today... Looking for bears in Romania's Carpathian Mountains

As we climbed quietly through the beech woods, Mihai our guide, pointed to a fruity-smelling mush on the path in front of us. "Bear poo" he whispered. I exchanged hopeful glances with my colleagues who, like me, had stayed on in Romania after our workshop in the hope of seeing European brown bear in the Carpathian mountains.



We had spent the previous week with the staff of Fondation Carpathia Conservation (FCC) an NGO focused on conserving and restoring the region's forests. Following the end of the Soviet era many of the forests were returned to the local owners from which they had been forcibly 'nationalised'. This has led to a logging frenzy in recent years, as owners rush to earn a quick buck. Virgin, old growth forests, home to wolves, lynx, bears and golden eagles, are being clear-felled with little or no regard to the impact on wildlife or the wider environment. FCC's plan, with US\$ 5 million of funding from the Endangered Landscapes Programme that I manage, is to secure, through ownership or long-lease, over 200,000 hectares of forest and then work with government to establish a spectacular new national park.

Linked to this objective they are working closely with local communities to develop nature-based businesses that can replace jobs and incomes from forestry. The wildlife hide that we were headed towards is part of that strategy. Perched in a clearing on hillside frequently crossed by wildlife as they move to drink at natural water sources, a log cabin with a massive picture window came into view.



View from the hide

The first choice as we entered was whether or not to light the wood burning stove. It was freezing inside but Mihai warned us that the smoke from the fire could deter the animals we had come to see. So, we elected to stay cold and wrapped in all our layers, we sat and waited as the sun set.

We always knew that the prospects of seeing bears on this visit were slim. The season for bear watching had officially closed as animals had started preparing for their winter hibernation. We were hopeful nonetheless and as the light faded, we saw movement in the lengthening shadows. Not a bear unfortunately but an inquisitive and cautious red deer hind with a fawn. They moved off and then a little later a large wild boar came into view. We watched until it was completely dark and then turned to light the fire and prepare dinner. I won't pretend that we weren't disappointed, but it was still an amazing experience.

The next day we visited another of FCC's projects. Conserving the forest isn't without conflict with local communities – bears and wolves frequently attack their livestock. To respond to this a 'rapid response team' has been established. Reports from farmers of attacks on their flocks leads to quick action including the installation of electric fences. FCC have also started a breeding programme for an imposing breed of Carpathian shepherd dog.



Carpathian sheepdog pups

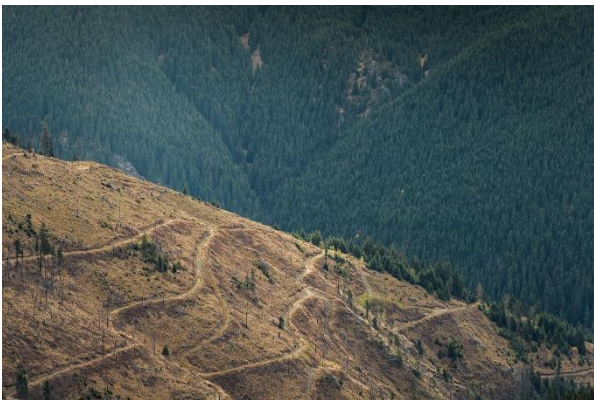
Puppies are offered free to shepherds in the Făgăraş mountains, an approach which also helps to revive the use of this traditional breed. As we entered the kennels the puppies rushed excitedly around our feet whilst their mother came to receive her share of our attention. It was hard to imagine these great softies being an effective deterrent against wolves and bears. But apparently that is their characteristic – friendly towards people but fearlessly aggressive if called on to defend their flocks.



Virgin beech forest - by David Thomas



Făgăraș mountains – by Dan Dinu



Clear cut forest – by Dan Dinhu

David Thomas



How using a Heat Pump can help us in going Carbon Neutral

During the recent election campaign all parties stated their ambition for the UK to be Carbon Neutral by 2050 at the very latest (ie within 30 years). Extinction Rebellion want this date brought forward to 2025 – five years away. In order to achieve this goal we will no longer be able to heat our homes using oil, LPG (Calor gas) or even gas. This poses the question what can we use instead. Some new-build homes are designed to lose as little heat as possible by using large amounts of insulation and modern technology. The vast majority of us in Reach live in older houses which cannot make use of some modern techniques.

A possible way forward is to use a heat pump. This is not a new concept and we all use one everyday – our fridges and freezers. They work by ‘pumping’ heat from one place to another. In the case of a fridge from the inside of an insulated box into the kitchen, cooling one and heating the other. Heating your home using a heat pump involves taking heat from the air or ground and concentrating it into your home.

In a conventional central heating system oil is burnt to produce heat which warms water which is then pumped round the house into radiators which then warm the rooms. Burning fuel in this way is roughly 80-95% efficient depending on the age and type of boiler. It is likely the boiler will need to be replaced at least once, probably twice in the next 30 years.

An Air Source Heat Pump takes a small amount of heat from a large amount of air and uses that in place of a conventional boiler. Unfortunately, as the weather gets colder and we want more heat for our homes, less heat is available from the air and the pump has to work harder to make our home feel warm. The compressor which drives the process is relatively small with the result that for every 1kw put into the system by electricity will give approximately 3kw of useful heat in the home - (300% efficient).

A Ground Source Heat Pump will take the heat energy from the ground either by using a borehole or ‘slinky’ coils buried 1m or so down. Using a borehole roughly 100m deep means a constant supply of heat at approx. 12C throughout the year and resulting in an efficiency of roughly 400%. However, digging a borehole or burying a long length of slinky is not cheap.

Heat pumps can replace existing boilers but are more expensive to install at present but will save money in the long term. They are cheaper to run and this price advantage will only increase in the coming years as the oil price increases. As they only use electricity, which can be generated renewably, installing one reduces our Carbon Footprint. In practice we will have to modify slightly the way homes are heated using a heat pump and I will cover some of that in a later issue.

Tony Jordan

Rosanna's Ramblings

The Certainty of Uncertainty

First of all, this piece comes with a bit of a Health Warning – or a Trigger Alert as the current terminology prefers. Well, actually it's among other things a real health warning and bit of public health information sharing for which I request your indulgence.



It all started in the autumn of 2018. One of my lovely acupuncture patients, back in Northamptonshire, mentioned that she was troubled by some vague symptoms – abdominal discomfort, bloating and bit of pelvic pain – and I suggested to her, as my training had trained me to do, that I thought it would be just as well to go to her GP and ask to be checked out for ovarian cancer. I wasn't alarmed, but then again ovarian cancer doesn't tend to be alarming until it is ... very alarming. I thought nothing more of it and hadn't seen the patient again as I stopped travelling back to Northants for work last January. Fast forward to June 2019 and out of the blue I got a text from her saying she wished she had listened to me when I had asked her to get checked out. She hadn't, until she eventually did half a year later, and a large tumour had been found. She is now halfway through a long stretch of chemotherapy, having needed major surgery.

So why am I writing about this here? Well, it's because I feel it's vital to spread the word to all women to be alert, without being obsessive and to get things checked out. I won't waste my word count listing all the possible vague signs, a quick internet search will do that for you. But I will tell you that I wasn't sure there was anything to worry about, but there was. And that got me worried as I, along with probably the majority of middle-aged (or even young) women had been experiencing quite a few of the same muted symptoms. So because I'm a Girl Who Likes to Know and I don't do well with uncertainty, I took myself off to my GP, told her the story and she agreed with surprising alacrity to my request to get checked out myself. An ultrasound scan at Newmarket revealed all was well, everywhere, with all my organs (surprisingly gratifying to know) except ... "oh goodness, you've got three very large gallstones!". Now, I had absolutely no idea that this was the case, having had a complete absence of the horrible, intense and feared pain often associated with gallstones. So that was a little alarming – how could I have so certainly been unaware of what had now been revealed as very certain indeed?

Two months of angelically-adhered-to fat-free eating (yes, dear reader, even over Christmas – fear of pain being quite an effective motivator) was followed, on 9 January, with surgery to remove the troubled but not troublesome organ – and there the certainty/uncertainty conundrum had inevitably to rear its tricky head again.

Because as anyone who has faced the prospect of surgery will know, you know it's going to happen (certain), you don't know exactly how it will go (uncertain), you fear the anaesthetic and its associated relinquishing of control and imperative to trust others (certain) and you have no idea how all that will feel to you afterwards (uncertain). And behold, the certain "three very large" stones turned out to be not three, not four, but five. To avoid upsetting the squeamish among you, I won't say more about them other than to say that the highly experienced surgeon was rendered wide-eyed by them and visiting nurses came in to gawp at them in their jars. So there was the utterly certain, but completely surreal, evidence of something that had apparently been evicted from their covert abode inside me.

Now I'm truly glad all that's out of the way and I'm on the road to recovering from the unpleasantness of surgery and the way it temporarily turned a not-yet-quite-sixty-year-old into an unnerving simulacrum of my parents in their final months – needing help to get up, needing help with everything. A chastening experience, I can tell you, and I was relieved to discover that without any such plan, I was as appreciative and polite and grateful towards my carers as my old Ma had been when deep in dementia, a trait that earned her their love and devotion. But the whole experience has changed the way I think about my relationship with, my investment in, apparently certain expectations of what's coming up ahead. And that's quite a tough lesson to learn for someone like me, who enjoys consulting my diary – still in paper form – to map out the shape of the months to come. I've cleared my work diary for three weeks, wanting to model to my patients what 'looking after yourself' looks like and in doing so I had no idea whether I would actually need to extend that time, or would find myself gleefully enjoying an unexpected rest in this too-mild late winter that is feeling like spring. Just at the moment, writing this on the fourth day after surgery, I think that I'll probably be picking up well in about a week – but hey, what do I know?



And to bring this piece back into our very particular location, last night Charles and I took a slow walk to see whether we could catch another murmuration of starlings on Reach Fen.

We know (certainly) that that can happen (uncertainly) and even when we know that that probably WILL happen (after all, the darling birds do need to settle down for the night somehow, whatever the conditions), exactly WHEN is still an exciting unknown and exactly HOW they will do it is an utterly and joyfully random event. We've caught at least ten murmurations so far this winter and the only common denominator has been the starlingness of them. But we can be utterly certain that each one we might be lucky enough to witness will be unique, and an undeserved blessing to behold.



Rosanna Moseley Gore

Snakehall Farm

What's in the Shop?

Happy New Year to you all. Well it's that time again where we make resolutions for the coming year, getting fit, losing weight, embarking on Veganuary, Dry January and other crazes to get us feeling healthy and in a better mindset after the Christmas indulgence. In our shops, we have a variety of organic produce which will help you to commit to these healthy goals throughout the year. As the seasons change, so does our selection of harvested crops. Currently we have a choice of squashes which would make some yummy winter soups, some colourful rainbow carrots which would make a great addition to a roast dinner, we also have our chutneys and jams and much more. We have now installed a Paypal account for the farm shop so you can make an electronic payment. Paypal charge us 3% + 20p transaction fee so if possible, cash payments would be preferred. Further information regarding this is on the shop noticeboard. To get a full list of what is in the shop please head to: <https://prospectstrust.org.uk/what-we-sell/>

Successful fundraising, ending 2019 on a high!

We have had a successful end to 2019 with our fundraising. Farmer Mark reprised his role, helping Santa during the busy festive season and raised a whopping £463.00 for The Prospects Trust, so a big thank you to him, we are sure Santa appreciated an extra pair of hands during his busiest season.



We would also like to say a massive thank you to The Devils Dyke Morris Men, Tracey Canham at Turners and everyone who donated to our Leaky Dishwasher Appeal, thanks to your generosity we were able to purchase a new dishwasher for our Kitchen. Without your support, we wouldn't be able to provide such a wonderful place for our Co-Workers to come to.

The Prospects Trust through the eyes of a volunteer

We have been really lucky with the range of support we have had over the years, whether it be promoting us by word of mouth, buying our produce, donations, corporate volunteer days to name a few but we also wouldn't be able to do the work we do on the farm and at the shop without people offering up their spare time to volunteer here at The Trust. Recently we welcomed new volunteers to the farm and I sat down with Gina who joined us in November to have a chat about what made her choose to volunteer here and how she is finding it:



Why did you choose The Prospects Trust to volunteer for?

I am interested in horticulture and also wanted to work with people with additional needs. The Trust offers both these things so it was a perfect combination. Plus it's close to home.

What do you like most about volunteering here?

I enjoy working with the people here, they are friendly and there is also lots of laughter. I love working outside whatever the weather, just wear the right clothes and you'll be fine. I also enjoy doing manual work. I started in a gloomy winter month, so I am looking forward to working in the changing seasons.

If you are interested in becoming a volunteer please call us on 01638 741551 or email enquiries@prospectstrust.org.uk.

Liz Pitt

Bottisham and Burwell Photographic Club

"What's in your hand?"

You don't have to be an expert to start your journey or hobby in photography. You don't even need to be that knowledgeable on the subject. That works for me - trust me, I know nothing.



Knowledge and know how comes from experience, and you don't gain experience unless you actually do something. Take photos - practice, practice, practice.

Do you feel you're not a real photographer – whatever that is – because you take photos with your phone and not a big fancy camera? Well if you do take photos with your phone, please stand up and give yourselves a big round of applause. No, I mean it. Really. You're part of the biggest revolution in photography since Louis Daguerre accidentally spilt some Silver Halides in the late 1830's and changed photography forever.

With your phone you have access to more gear with what's in your pocket than any photographer just 20 years ago. When starting your photography journey, it does not matter what camera you use, £25 to £25,000 the results will be the same, trust me on this. In my photographic journey, I've won photographic competitions with images taken with both my big fancy Canon camera and my old battered iPhone. I would say that the more limited you are as a photographer when starting out, the stronger a photographer you will become. I started out in the 90's with the old disposable single use film cameras. Yes. I'm getting old.

As with everything, there are rules and tips for you follow, and break when you feel on top of the world with your phone photography. So to get the best from your phone camera here are some of my top tip's for you try out.

Don't zoom in. After all I've said, the lens on your phone is a bit rubbish. To make sure you get the best image possible don't zoom. Make sure the image you want to take fills the screen. If you need to get a closer image, move closer – if safe and able. Please don't come to me with lost phones or limbs as a result of trying to get a closer shot.

Change your perspective. Your phone is nice and small, so you can easily and quickly move it around to find a unique angle and height that will make your image stand out. Be brave, use the panorama option too!

The devils in the detail. It's the small things that matter, close-up images that show small details can be compelling. Keep an eye out for textures and patterns like peeling paint, a gravel road, a wooden tabletop, or that spider hanging by its thread over in the corner. Only don't zoom in!

Use natural light – even at night. It's hard to find a great phone photo that was taken with a flash. Most of the time, they make your photo look overexposed, altering colours - not in a good way - and making human subjects look washed out. Actually, turn off your flash. I'll wait. Good your back.

Get a tripod or stand. I have a little tabletop phone stand. It was £1 from a pound shop in Newmarket. Its brilliant, small and light, an easy way to ensure the shot stays level and balanced when you shoot -- especially if you want to be in the picture. No, not a selfie-stick. No. Put it down.



"Here comes the tide"
iPhone photo by Elliot Needham

Don't forget the apps. I shoot using my phones native camera app – Yes, I still do shoot with my phone. A lot. I have two goto apps that I would be lost without and highly recommend. The first is free. It's called "Snapseed". It's made by Google and you can find it in your phone's app store. This is a powerful little photo editing tool. It's very simple to use and its features appear to grow as your confidence with it grows. The second is a paid app - and only is available for Apple phones - I'm so sorry – It's called "Spectre". It allows you to take long exposure shots without relying on having a tripod to hand all the time.

The main thing to know is, don't worry about the images you are taking. You like them. And that's all that matters. Sure, there are a million other photographers out there and it can appear to be daunting with everyone but you appearing to be "an expert" in photography, but there is only one photographer who takes the images you do. You. Your images will stand out from the rest. Why, because they are yours, they are different. It's hard as a photographer when starting not follow everyone else, to copy subjects and styles – no thanks to Instagram and it's "likes" button!! Be yourself, don't keep up with everyone else, follow your passions and explore your creativity to create unique photographs. Don't worry about others, do what feels right to you. I guarantee you – if you like your images, someone else will like them too.

To be a photographer is to grow. Photography is as much a technical skill as it is a creative escape and it's all too easy to say you need an "expensive thingy" to take "proper" images and you can quickly lose yourself in the quagmire of gear aimed at photographers and dampen your creative spark. Stop. Take out your phone. Open the camera app and take pictures, the rest will come with practice, practice, practice.



The river Avon at Bath – iPhone photo by Elliot Needham

If you're still unsure where and how to start and need some inspiration to get your photographic creative juices flowing, a great place to go is your local photographic club. The Bottisham and Burwell Photographic Club meet just around the corner at the Lode Chapel in the heart of Lode every Tuesday at 7.30pm. Pop along, meet the members, have a cup of tea. Or visit our web site at www.bottburpc.org. The site has even more details about who we are and what we get up to as well as links to hints and tips and helpful blog posts to get you out and about taking pictures in no time. Welcome to the photographic revolution.

Happy Snapping

Elliot Needham
Bottisham and Burwell Photographic Club

Neighbourhood Watch

I don't send out many messages about scams as there are just so many of them. In respect of phone scams, last Wednesday morning I had 5 incoming calls on the landline, all were scams and all quite common.

2 different versions telling me that BT will be cutting off my internet, one from Microsoft Technical Department, one telling me that £600 had been withdrawn from my account by credit card and one from Amazon Prime advising me that my subscription had been renewed. As you will no doubt guess none were from who they claimed to be and all that in just one morning.

I also know of coordinators that have calls relating to supposed investment opportunities and supposed fraud investigation departments. In fact it is best to assume that all calls are bogus - what a world we live in.

Email scams are also plentiful. One common one is supposedly sent by TV Licensing Department to say that there has been a problem with your latest payment to renew your license and please update your details by clicking here. There are a few variations on this, but some look very authentic with the right logo and also including links to the genuine TV Licencing website.

I am surprised to find that I am still regularly getting messages saying that someone wants to transfer money into the country, usually as a result of a legacy, (had 3 last week) and if I will assist, I can take a large cut. You would think they would have given up on that one by now!

I also receive many messages with dodgy links - I don't open links, so please do not send me any.

Neighbourhood watch has teamed up with Avast to take some action on cyber crime and this was announced at the beginning of the month. There is a new website that you can be accessed via the neighbourhood watch site or go to <https://www.avast.com/uk-cyberhood#pc>

The site includes an on-line training course with questions and answers. The answers are all pretty easy, but if you are of the "it's better not to know type" then the course is not for you.

It does not provide a happy message! We are all at serious risk of being duped!

If you want to know more contact:

Kevin Evans

Secretary, East Cambridgeshire Neighbourhood Watch
01353 614892 or kevin.g.evans@ntlworld.com

Out and About Winter 2020

Hearteningly, the shortest day is behind us, days are lengthening, birdsong is more apparent, sunlight is brighter and stronger. Pale snowdrops in Pit Lane and Reach Wood gladden the eye and contrast with muddy verges. I find the mixed weather patterns confusing, days of sunshine and over-warm temperatures seem quickly followed by fierce winds, sub-zero temperatures and frosts.



Water levels are unquestionably high. Pools of standing water in nearby fen fields immediately attract birds - lapwing, gulls, Canada and greylag geese. During a drive from Great Lane (in the Upware direction) on 20 January we spotted muntjac and roe deer, a green woodpecker, 2 buzzards, 2 kestrels, 3 grey herons, blackbirds, pheasants, woodpigeons, flocks of goldfinch and long-tailed tits. Impressive wildlife sightings for a journey of less than a mile.



Grey heron, affectionally known as "Frankie" in the fens

There is plenty of activity amongst the trees and skeletal branches of Reach Wood, the rustlings of rabbits (looking healthier once again), muntjac deer, squirrels, jays, woodpeckers, the kestrel a daily visitor and buzzards pass in effortless flight, their wingspan approaches an impressive two metres.

In the fields and hedgerows rodents squeak and the thrushes - fieldfare and redwing are visible. As dusk falls the sounds of hunting owls, lapwing and geese can be heard nearby.

I was loathe to break the intricate, sticky spider's web that spanned our field padlock recently, the fruit of a hard night's labour. Seen in low sun, a heavy dew or early frost these silk structures resemble jewelled artefacts. In the field opposite, wrens can be seen and heard on a daily basis as they search for lacewings and spiders to feed on. Despite being highly territorial birds, they roost as a group, several dozen huddling together for warmth during the winter months when it's bitterly cold.

22.1. A muscovy duck landed on Ron & Penny's conservatory roof, we wondered if it thought the shiny surface was water.



Penny's photo of a Muscovy Duck on their conservatory roof

The astonishing new art sculpture installation at Wicken Fen (picture below) is well worth a visit, note - route is muddy in places. More information can be found at: www.nationaltrust.org.uk/wicken-fen-nature-reserve/features/mother--at-wicken-fen-by-studio-morison



I read that Britain's woodland cover 'has returned to medieval levels, thanks to the trend for rewilding and recent tree-planting initiatives, public and private'. Cambridgeshire Tree Planting Community offer a wide variety of native trees to the public, the smallest order is for 5. The trees are supplied as whips (slender, unbranched tree) with predator-proof biodegradable guards. Duncan and his volunteers helped plant field maple, silver birch and hazel, ie. equine friendly trees, to delineate our field boundary. Please get in touch with the initiative if you'd like FREE trees.

Sightings by Reach Villagers:

Ron & Penny: The squirrels certainly had a good breeding season in Reach wood last year, it's not unusual to see three at a time. They are getting more tame, their only predators being a few dogs who half-heartedly chase them. This year they pinched all the hazel and cobnuts before they were fit for human eating. A few years ago grey squirrels hibernated during the winter months but are now apparent all the year round (global warming again?).



Picture taken on December 7th in Reach Wood (no more than 5 metres away). Still filling 3 bird feeders with sunflower hearts every day, beautiful displays of long-tailed tits and various finches and buntings'.

Nick Acklam:

23 November: three bats spotted hawking above the high hedge of Straight Drove during a twilight walk in mild and moist conditions.

28 November: a loose herd of ten very flighty Roe deer on Hurdle Hall. A tawny owl lifts from Ron's pasture and flies into the ivy of the clunch cliff behind.

30 November: a male Hen Harrier flies over Swaffham Lode and on to Adventurers Ground heading, in my mind's eye, towards Wicken Fen.

2 December: notable numbers of freshwater mussel shells have recently been distributed over Tubney Fen and on the banks of Reach Lode. I suspect these originate from vegetation removed from the lode by the Environment Agency a few days earlier.

I am unsure what was responsible but imagine that the shells were originally full - why move them otherwise? A flock of 40 Lapwing fly low, fast and silent across Burwell Fen. The dying rays of the sun catch the black and white of the birds' plumage which stands out against the orange and beige of the landscape.

11 December: eleven Roe deer on Hurdle Hall today, the largest group I have ever seen locally.

14 December: the Mute swan couple from the Hythe sit on Reach Lode bank by the cycle bridge. They are accompanied by one remaining juvenile from this year's brood.

15 December: four Whooper swans briefly alight on Burwell Fen Mere before flying west and then north.

29 December: two flocks of Wood Pigeon, numbering about 60 birds in total take flight from the field adjoining Straight Drove. The event is remarkably noisy, sounding rather like the crackle of a bonfire. Later a very large flock of Lapwing perhaps a 100 birds or more circle Burwell Fen. The swooping, pulsing nature of the flight is similar to a murmuration of starlings.

30 December: Shoveler, Wigeon and Shelduck present in large numbers on Burwell Fen Mere in soft sunlight. Large numbers of coots and a few Tufted Duck are gathered at Pout Hall. I feel very lucky to have the Vision Lands on my doorstep and, as the bush fires rage in Australia, a relatively equitable climate to live in.

11 January: five Heron group together on one of the damp parts of Tubney Fen. A kestrel flies below ground level in one of the deeper ditches of Tubney before emerging onto a fence post. I saw buzzard doing the same thing in the same place last winter.

16 January: a large Lapwing presence again, this time on the black soil field adjacent to Headlake Drove. The field has been ploughed recently and in the low light, the birds merge with the earth on landing, reappearing like a puff of smoke when they take flight. 30 or so wigeon take flight from the smaller of the two ponds created when the ramps to Reach Lode cycle bridge were created. The pond has only recently held meaningful amounts of water for a couple of days. On the following day there are 6 wigeon on the cattle pond in the centre of Tubney Fen which is being re-filled with water from the Lode.

18 January: a Marsh Harrier flies south west over Tubney Mere.

Thank you, as ever, Reach wildlife sighting contributors

Joss Goodchild
jossbmg@icloud.com

Cambridgeshire Fire and Rescue



Cambridgeshire Fire and Rescue Service is looking for on-call firefighters to join on-call fire stations around the county. On-call firefighters aren't based at a fire station, instead they carry a pager and respond to emergency incidents as and when they happen.

The Service has introduced a new daytime contract to the on-call service, which allows people to be available to respond to emergencies from just 24 hours a week, for example while working at their regular day job or from home.

The new contract is available for anyone interested in joining an on-call station, providing they can offer a minimum of 24 hours per week (between 7am and 7pm during the week) and attend the weekly drill night.

On-call firefighters can be men and women that come from every walk of life. They may be at home, working for themselves or a nearby company, or even out in their local community. They must maintain their availability to respond to emergencies by staying within five minutes travel time of the fire station. They receive an annual wage plus additional payments for attending incidents and drill nights.

Those interested in finding out more can visit www.cambsfire.gov.uk/on-call or contact recruitment@cambsfire.gov.uk

Like us on Facebook for regular updates www.facebook.com/cambsfrs or follow us on Twitter @cambsfrs. For more information or to get in touch contact us at firefire@cambsfire.gov.uk or on 0800 9179994.

Burwell & Reach Car Scheme

If you are unable to use conventional transport, the scheme can help you to travel from Reach or Burwell to:

*Chiropodists, Dentists, Doctors, Opticians,
Shops, Visit Friends . . .*

Transport cannot be provided for Hospital Outpatient Appointments

Contact hours are 8.30am to 5.00pm Monday to Friday – please give us 24 hours notice
01638 742543 (answerphone) and we will return your call

Cambridgeshire Constabulary



Creating a safer
Cambridgeshire

Officers will be holding regular surgeries at Ely Police Station. Each Monday (starting 20 January), the doors of the station in Nutholt Lane will be open to the public between 12pm and 5pm.



PCSO Katrina Walker

Members of the public are invited to go along and discuss any policing issues that may be affecting them as an individual or as a community. Sergeant Mark Rabel said: "We want to offer our communities an opportunity to come and speak to us, face-to-face on a regular basis. We look forward to seeing you at the station and making a difference together."

Tara Dundon

Senior Communications Officer (South)
01480 422480 or 07713 997695
Cambridgeshire Constabulary
Hinchingsbrooke Park

There is a yellow phone available outside or members of the public can report crime by calling 101 or via our website www.cambs.police.uk/report or take part in a webchat.

Burwell Museum



Sprucing up the Windmill

Those of you who pass the windmill regularly may have noticed that we've been having a bit of work done - we're making sure that it looks its best for its 200th birthday in 2020! Our mill team have been working on the fantail (the small set of sails at the back of the windmill) and we've had new doors fitted. We're also planning a lot of repainting.

We're still in the process of getting planning permission for the new path to the windmill, but we really hope that that will be ready sometime soon so that it's easier for those with mobility issues to get to us. If you think that you could help to keep the mill going and you have some free time on Tuesdays, the mill team would be delighted to hear from you - contact us on volunteers@burwellmuseum.org.uk for more information.

An exciting year ahead!

We're looking forward to an exciting year; the events programme is taking shape nicely and should be available early in 2020. Our key events will be in May, when we have VE day 75 on Friday the 8th and then the Mill's 200th birthday celebrations on Saturday 9th and Sunday 10th. We'll be looking for lots of help over the weekend, so let us know if you would like to join us!

We're also hoping to do an oral history project around VE day 75, so if you remember the original VE day celebrations in Burwell or elsewhere and would be prepared to talk to us about them then please contact Alison on education@burwellmuseum.org.uk.

Opening Weekend and Easter Egg Hunt

The museum re-opens at Easter weekend, Sunday 12th and Bank Holiday Monday 13th April 2020 for our annual Easter Egg Hunt. Loads of family fun including chocolate prizes for all egg hunters, crafts, tombola and treats in the tearoom!

Standard museum admission (now £5 adults, still £2 for children and £10 for a family) applies, season ticket holders and under 3s are free. Egg hunt entry is an additional £1 per person.

The museum will then be open every Thursday, Sunday and Bank Holiday Monday from Easter-October, 11.00-5.00. Last entry at 4.00.

Website: www.burwellmuseum.org.uk

Tel: 01638 605544

Email: museum@burwellmuseum.org.uk

Burwell Museum, Mill Close, Burwell CB25 0HL

Lode Spring Jumble Sale

Saturday 14th March 2020

From 2-4pm

**St. James' Church, High Street,
Lode, CB259EH**

*There is a car park opposite the church,
please leave your car there, so reducing
congestion in the High Street*

£1 adults and children are free.

*Refreshments are served, including tea,
coffee and home-made cakes, to keep you
going, during or after your jumbling
efforts!*

*Come along and find some bargains. The
money raised goes towards community
activities and some smaller local charities.*

Finally, Jumble sales are a way of reducing waste, by recycling and re-using stuff that might otherwise be thrown away. Come along and join us, we look forward to seeing you.

New to Donkeys

Since childhood I've had a soft spot for donkeys but it's taken half a century to finally become an owner.



Unfortunately, we were ineligible for Donkey Sanctuary rescue loans because our field is not adjacent to the house, the search to find rescue donkeys privately started. In the meantime I attended training days, shows, events and read all the Keeping A Donkey books I could find.

I discovered donkeys have characteristics that differ from horses in countless ways. They are intelligent and will stop to consider an unusual situation, this is wrongly attributed to stubbornness. They are curious. They are naturally gregarious animals and need company, their large ears developed to hear the bray of another donkey 2 miles away. Their eye positioning enables sight of all 4 feet at once, resulting in extreme sure footedness. Donkeys can out accelerate a horse over 200 metres. Just like racehorses, no matter what date the donkey is born it is a yearling on 1 January, 2 yrs the following Jan etc. Donkeys live between 30 and 50 yrs. Although the Romans used them as working animals they originated from the hot margin desert lands of Africa and Asia and did not develop the second waterproof coat that horses have, and therefore feel the cold. A caution - donkeys have strong territorial instincts, in many countries they are used to guard herds of sheep and goats from wolves, coyotes, foxes, dogs. They are dangerous to dogs, Reach villagers please beware - dogs must no longer stray into our field.

Months passed and my Donkey Purchase Priority List underwent several revisions. The plan to find two with: lovely temperaments, mid-age range, already paired, same sex, small size, no pre-existing medical ailments finally resulted in the acquisition of three young donkeys, mixed sexes, never met, two large sizes! Crucially, all displayed good temperaments.

I prepared for their arrival, bought barley straw, a special mineral pasture lick, painted wooden surfaces with chew-deterrent paint, lowered temporary electric fencing from the highest post notches to just about the lowest, located a donkey familiar farrier and vet.

All three donkeys originated from Ireland. Small grey 5yo, Dante, was found alone and forlorn in a field by his previous owner. The larger grey/chesnut, Peppercorn, had 5 homes before the age of 3yrs and passed through Appleby Horse Fair. The third donkey (Ramble) survived on a sleet-covered hillside in North Lancashire with a horse that attacked him. He'd been a rescue that the auction house refused to put through the sale due to his appalling condition.

I fought to remove him from yet another unhappy situation but, having only limited land, the hard decision was made to give him to Jo in Swaffham Bulbeck where he is wonderfully settled and content at her lovely place, with 3 other donkeys.

Peppercorn and Dante were admirably well behaved, if shy, from the start. In 8 short weeks I've learnt they are calm and gentle, they are sweetly inquisitive, they silently creep up behind me and I'm forever turning round to find two heads just centimetres away! Their little hooves don't poach the field gateways but the mess left behind when they adeptly pick out hay from the straw mix might cancel out that plus-point. They make me smile and laugh a lot. I start the day in good humour. They are undoubtedly therapeutic.



Dante and Peppercorn

Joss Goodchild
jossbmg@icloud.com



Metal Detecting

I'd like to update the village on my metal detecting activities.

I have carried out three short searches in the area of the green where David's ring is thought to be lost and dug a number of signals that I thought might be it, but sadly, no ring. That said, I don't think for a moment that the ring is not there. The green has proven to be a challenging area to search due the large number of signals from lost change and metallic rubbish in the ground and it will take time to work over the area in stages, each time gradually adjusting the detector to enable separation of the signals and their removal.

As per the original permission, all finds have been handed over to the Parish Council.

Items include £23.95 in change, 5 pre-decimal coins, a 20 Euro Cent coin and a radiator key (see below).

Having spoken to a number of people in the village there seems to be a general interest in the hobby, so I will happily continue to submit updates from my searches in other areas of permission, as and when I find anything worthy that is!



Luke Mercer
Great Lane, Reach
Operations Manager - The Babraham Research Campus
luke.mercer@babraham.ac.uk
Mob. +44 (0)7920 138514

Food Focus

In haste and without much originality this soup has developed from the Nigel Slater recipe I wrote about in here a while ago – lemongrass and prawn curry. I thought his curry paste was so good that I could use it for a soup base as well as a curry paste...so I experimented.



As ever use what you have and don't get too hung up on quantities. I serve it with a poppadum and chopped coriander on top. It is a bit a faff and somewhat Ottolenghi-ish in the number of ingredients, but it's had rave reviews and I can't think of anything else different I've cooked recently! It's almost a meal in itself too and can easily be made vegetarian.

- ½ a butternut squash roasted in oil in the oven – or any kind of squash – Snakehall still have a few
- Fry onion in oil, when nearly done add the following;
- A carrot or two grated
- A knob of ginger grated or chopped small
- A clove or two of garlic chopped
- A bunch of coriander stalks chopped
- A red chilli (deseeded) and chopped
- A lemongrass stalk chopped finely
- Fry until soft then add a tablespoon of tumeric



Add stock either veg or chicken and then a tin of coconut milk or some coconut cream (the solid stuff). Pour in some red lentils. Add a chopped sweet potato or two depending on size. Boil up until potato soft and then whizz. When smooth, add a tablespoon of nam pla (unless making vegetarian version) and a teaspoon of mirin. Squeeze in the juice of a lime. I have added a teaspoon of brown sugar in the past but I don't think it really needs it. Let me know what you think!

Catherine Gibson

The Dyke's End



Please visit our website at www.dykesendreach.co.uk/ and you'll be able to see all our menu's and our special events.

Opening and Food Service Times

Monday We are closed all day (but re-opening for drinks only in the evening from Monday March 30th 2020)

Tuesday
Bar: Midday to 3pm, 6pm to 10pm
Food: Our kitchen is closed (but re-opening on Tuesdays in the Spring)

Wednesday and Thursday
Bar: Midday to 3pm, 6pm to 10pm
Food: Midday to 2pm, 6pm to 9pm

Friday
Bar: Midday to 3pm, 5.30pm to 11pm
Food: Midday to 2pm, 6pm to 9pm

Saturday
Bar: Midday to 11pm
Food: Midday to 2.30pm, 6pm to 9.30pm

Sunday
Bar: Midday to 10pm
Food: Midday to 4pm

Please note that we may close early on weekday lunchtimes if no patrons remain on the premises after 2pm.

Finally, we do have a small number of spaces left on **Valentines Night** (see menu on opposite page) so if you'd like to come along, please book soonest.

Mel Longfoot

Tel: 743816

The Dyke's End

Valentine's Day Menu
Friday February 14th (6-9pm)
£26.50 per person
Booking Recommended

Starters

Lemon, Dill & Trout Fishcakes, Hollandaise Sauce, Poached Egg

Garlic & Rosemary Baked Camembert, Toasted Foccacia,
Chilli Jam (for two to share)

Warm Salad of Wood Pigeon, Lardons, Potatoes &
Walnut Oil Dressing

Mains

Mushroom Wellington, Dauphinoise Potatoes, French Beans, Red
Wine Jus (v)

Ribeye Steak, Skin on Fries, Portobello Mushroom, Grilled
Tomato, Onion Rings
Add a sauce – Peppercorn, Stilton, Garlic Butter £2.50 Supp

Pan Fried Sea Bass, Crispy Prosciutto, Wilted Spinach,
Crushed Baby Potatoes, Parsley Butter Sauce

Desserts

Fresh Strawberry Eton mess

Chocolate Brownie, Chantilly Cream, Chocolate Sauce

Sticky toffee Pudding, Toffee Sauce & Vanilla Ice Cream

Tea or Fresh Filter Coffee

IT Advice

May I start by thanking Eben for his contribution to the last issue. The Pi has been an amazing success and congratulations to everyone concerned.



In this issue I intend to cover a few recent developments:

Firstly, I have had phone calls about Microsoft's withdrawal for support for Windows 7 on January 14. This has been reported for some time, but now Microsoft are sending increasingly obtrusive nagging messages to users.

Here's my advice:

If your computer is a domestic version over about 5 years old, or a more expensive professional model 7-8 years then it might be best to bite the bullet and replace it. If you only have light usage and balk at the expense, there are good re-furbished computers available at reasonable prices which have normally come in from businesses so they were top of the range when they were made and still have plenty of life left in them.

You can convert to Windows 10 without being charged providing your PC can run it. This is possible without any payment to Microsoft. It is still Windows and in my experience most people make the change without too much trouble, after all, most of your time is spent in programs like Word and Chrome which don't change. If you are tempted to Apple there is a steeper initial learning curve and some familiar programs may not be available or have to be purchased in a new version.

In either case you will be faced with an empty computer so you will have to re-install all your data and Programs (Apps) so you will need to back everything up and find your passwords and licence numbers for email, Programs and websites and re-connect to the printer before you start. In my experience re-loading Windows and transferring everything takes 4-5 hours, so for me to do it, it would be a £100 to £125 job.

The alternative is to continue with Windows 7 but if you bank or buy products online or hold sensitive information then this is not advisable. If you just use your PC for photos and email etc. then you should be ok for a while, updates normally only occur on a monthly basis so not too much should change yet.

If you go down this route abandon Internet Explorer and set Google Chrome as your default browser. Google have promised to update Chrome on Windows 7 for at least 18 months. Backup everything important to a USB stick or drive and put it in a safe place in case something untoward happens. Use your existing anti-virus or install a free one with Windows 7 support like Bitdefender. Budget to upgrade in the next 12-18 months

Other news:

Disney has announced its new streaming service, Disney+, which will be launched in the UK on March 31st. They will be removing their films from other services over time. Another streaming service, BritBox, has been announced which will carry archived programs from BBC, ITV and Channels 4 and 5. There are plans to commission some original content and it is available on 30 days trial. See my June article about accessing streaming services.

Do not hesitate to contact me for clarification on anything mentioned here or technology queries.

David McMillan
01638 741259



Picture courtesy of Penny Greenhill



Picture courtesy of Rosanna Moseley-Gore

Reach Fair

By Royal Charter since 1201

VILLAGE FAIR

Needs You!

As well as being a splendid day out, each year Reach Fair raises thousands of pounds which contribute to our community facilities

A committee dedicated to run the Fair has been established

The new committee meets on the third Tuesday of each month and we would love to have your fresh input - so come along!

**Next meeting:
8PM Tuesday 11th February
2020 in the Village Hall**



Letter from the Vicarage

It wonder if, like me, you have ever looked at something that needs changing and been put off by thinking that things seem out of our control, or that it would take too much to make any significant change. We may be feeling despondent about the state of the world, the country, the environment and of course, there are times when huge changes are needed urgently, such as are needed to reverse the effects of climate change.



But I've been encouraged recently not to forget that small steps, multiplied many times over, can make a real difference to the direction we're going and the outcomes. The Church's season of Lent begins on Wednesday 26th February, which for many people is a time for looking afresh at making personal lifestyle changes. Perhaps it could also be a time for looking at how we can do things that focus on making a positive difference in our communities, our nation, our world. We can all try to make changes to the way we live and use the earth's resources. We can make choices about how we speak to each other and about each other, in person or online. We can seek to live generously and peaceably together. And when it all seems too hard, when we fail, which we sometimes will, we can pray for the grace and help of God, and start again with renewed courage, hope and perseverance. If you'd like to talk more about how we might partner together to make change happen, please get in touch.

Alongside our regular activities we have some special events coming up:

On 22nd March at 10am at St Mary's it is our Mothering Sunday Thanksgiving Service, where posies of flowers will be given out.

On Sunday 29th March at 10am we have a baptism service in Reach.

More details of our Easter services will be in the next edition of this magazine.

Our website and Facebook pages have up to date details events, activities and groups run by our churches. We run various groups and activities for families, children and young people. Refresh Café is every Friday 9.30 – 11.00am at St Mary's for pre-school children and their grown-ups.

On the first Friday of the month is our Youth Café in the Guildhall for year 7+ 7.45 – 9.15pm – next dates 7th February and 6th March.

Messy Church is on the last Sunday of the month – for families with children of all ages from tots to teens – next dates 23rd February and 29th March.

Please get in touch if you would like more information about these or any of our events or services, including weddings, christenings or a baby thanksgiving service for the gift of a child, or to find out more about the Christian faith, or just if you'd like a chat. All are welcome.

Revd Dr Eleanor Williams
Vicar of Burwell with Reach
01638 741262
vicar@stmarysburwell.org.uk

Lunchbreak Café



Lunchbreak Café, which is now in its 5th year, is open on the 4th Wednesday of every month in St Mary's Church, Burwell from 12.00noon till 2.00pm. If you've never tried it and would like to know more, read on!

Lunchbreak's aim is to provide a space for people to take time away from their usual routine. If you want some company, we have one or two large tables where you can join others in conversation - and usually quite a lot of laughter! If, on the other hand, you need some peace and quiet in the middle of a hectic day, sit at one of our small tables and soak up the wonderful atmosphere of St Mary's, you can do just that. We have customers from ages 1 to 90 and a children's area for our younger customers to play.

Our speciality is homemade soup and our team of soup makers produce an interesting selection each month. We always have a choice of at least 4 soups, most of which are suitable for vegetarians or vegans. We also serve Ploughman's lunches, other snacks like sausage rolls or quiche, homemade cake and tea or coffee. You can eat as much as you like and coming back for seconds is quite normal!

We don't make any specific charge for lunch. A donation to cover costs is welcome, but not essential. Any profit goes to church funds.

The next dates are February 26th or March 25th and reminders are publicised on our Facebook page <https://www.facebook.com/stmarysburwell>

Pat Chalmers
Leader of the Lunchbreak Café Team

Know Your District Councillors



East Cambs will shortly be sending out a questionnaire about buses, walking and cycling. This is to provide the evidence for the District Council's own policies and for our response to the Combined Authority's consultation on buses. Details will be sent to each household and you will be able to respond on-line or by completing the form and posting it back to the District Council or dropping it to a drop box in each village.

Public transport, cycle paths and pedestrian safety are all issues which are raised frequently with John and I, so we will be holding meetings to discuss your views as part of the consultation exercise. You are due to receive your questionnaires between 9-14 March, so we will arrange meetings around this time and advertise them in next month's village magazines.

The Council has also launched an Ideas Forum to collect ideas on how to make East Cambridgeshire carbon zero by 2050. If you would like to submit any ideas, you can do so at - <https://www.eastcambs.gov.uk/climatechange> or by email - climatechange@eastcambs.gov.uk or by calling Customer Services on 01353 665555. The Council will be putting together its strategy for discussion in April.

The Council Meeting scheduled for January was cancelled, due to lack of business, so the next meeting is on 20 February. This is likely to be a busy meeting because it is the meeting at which the Council will agree the budget for the year from 1 April, together with items not addressed at the cancelled January meeting.

The meeting of the Finance & Assets Committee will be held on 6 February. We hope that the audit of the Council's accounts to the year ended 31 March 2019 will be complete and we will have a revised set of accounts correcting the errors identified during the audit. It is clearly important that we understand the Council's true financial position as at 31 March 2019, including that of its Trading Companies, before we agree the budget.

Our next Councillors' Surgery is on Friday 28 February at 6.30 in Swaffham Prior Village Hall, followed by meet your councillors at the Red Lion pub. Our following surgery will be on Tuesday 24 March in Lode.

Charlotte Cane & John Trapp

Know Your Parish Council

Your councillors are:

| | | |
|------------------------|------------|--------------|
| Alex de Giorgio-Miller | Chair | 07771 348013 |
| Charlotte Cane | Vice Chair | 741064 |
| Rebecca Fordham | Councillor | 743331 |
| David McMillan | Councillor | 741259 |
| Andrew Trump | Councillor | 07980 955490 |
| Vacancy | Councillor | |
| Vacancy | Councillor | |

| | |
|-----------------|---------------------|
| Charlotte Cane | District Councillor |
| John Trapp | District Councillor |
| Joshua Schumann | County Councillor |

Your Clerk is Susan Bailey
29 Great Lane Reach CB25 0JF; 01638 743794
clerk@reachparishcouncil.org

Meetings take place in the Village Hall on the first Wednesday of each month. They start at 7.45pm and all Reach villagers are welcome to attend.

Reach Grant Fund

The Grant Fund replaces the Amenity Fund and exists to fund community activities in Reach.

Application forms should be downloaded from:
www.reach-village.co.uk/grant_fund.html
and should be completed and sent to the Clerk, Susan Bailey whose contact details are above.



Picture courtesy of Rosanna Moseley-Gore

Parish Council Meeting Minutes

Minutes of Reach Parish Council meeting held on; Wednesday 4th December 2019

Attendance

| | | |
|------------------------|---------------------|-------------|
| Alex de Giorgio-Miller | Chair | Present |
| Charlotte Cane | Vice Chair | Not Present |
| Diana Ward | Councillor | Present |
| Andrew Trump | Councillor | Present |
| David McMillan | Councillor | Not Present |
| Rebecca Fordham | Councillor | Present |
| | | |
| Susan Bailey | Clerk | Not Present |
| John Trapp | District Councillor | Present |
| Joshua Schumann | County Councillor | Not Present |

1. Declaration of Interests

There were none.

Forum for members of the public.

A member of the public attended to discuss the Cricket Pavilion, see below.

2. Planning Applications

19/01013/FUL – single storey extension, 28 Great Lane.

Following discussion, the PC resolved to comment that:

-no neighbours appeared to have been contacted.

-the access to the site is along a single track road with a tight turn and over a small bridge which already has been flagged for safety issues. We suggest that careful consideration of vehicular access and highway safety be taken during the construction period, should permission be granted.

3. County Councillor Report

None Received.

4. District Councillor Report

No report supplied. Cllr John Trapp attended the meeting and suggested that he would supply an overview of the planning process to a future meeting if useful.

5. Minutes of previous Meeting

Approved as correct.

6.1 Neighbourhood Plan

Funding - The project's funding for FY 2019/20 (£8750) has been received in the PC bank account.

Consultancy - The Group has appointed Alison Farmer to undertake a landscape appraisal in support of the Plan. An initial meeting with Alison, with Ian Poole in attendance, has been scheduled for 16 December.

The Project has just gained approval from MHCLG for technical support to develop a design code for the village. It is expected AECOM, the consultants who will lead this work, to begin quickly. The Group will ensure that work is coordinated with the landscape appraisal of Alison Farmer.

Residents' Survey - Our aspiration is that the survey will gather evidence from everyone over 16 living in Reach. We will also hold a forum to gather the views of residents under 16. Together, and with other evidence, the returns will inform the policy recommendations of the NP.

For a range of reasons relating to the resources available to the Group and our desire to ensure that we get no more than one return from each resident, the survey will only be paper-based.

Ian Poole has reviewed an advanced draft of the survey and is broadly content with our approach. The Group will now review his comments on the detail of the survey and will look to allocate the resources needed to format the survey, to get it printed, issued and collected and the associated communication strategy. We continue to hope that we can conduct the survey over the festive period which would assist our response rate.

The Hythe - There has still been no substantive response from Anglian Water following what we gauged to be a positive meeting on the Hythe on 5 September. We continue to encourage AW to engage.

6.2 Reach Grant Fund

A request had been received from the Prospects Trust to assist with the 30th birthday fundraising to redevelop the teaching rooms. Following discussion, the PC agreed a £500 grant with a review after the Fair.

6.3 Finance

A budget meeting had been held previously, the resulting Precept increase will be discussed at the January meeting.

The Clerk was to be asked to include all liabilities for the grant fund in the accounts.

6.4 Parish Council Members

No comments

6.5 Play Spaces

The PC are very grateful to David Pallant for his work on the bus shelter on the green. **Councillor de Giorgio-Miller** to ask for invoices of costs incurred and these will be refunded by the PC. Our thanks to David who very kind to give his time for free.

6.6 Rights of Way

Nothing to report.

6.7 24Acres Committee

Nothing to report.

7. Cricket pavilion

Details of the proposed pavilion at the 24Acres was discussed & it was agreed that the planning application should go via the PC, with the Cricket Club paying for all the expenses. The pavilion will be an asset for the entire village and can be used for various village functions.

8. Protecting the green from traveller's PC Policy

The policy document produced was unanimously accepted.

The Cemetery tap was discussed, and a new tap with lockable handle and combination lock was decided upon. **Clerk** to instruct contractor.

Andrew Trump confirmed the tap outside the Village Hall can be isolated from within and the electricity on the green is independent and the access point is secure.

9. Horse Chestnut tree on the green

No additional quotes had yet been received. Agreed Jan/Feb realistic timescale for this project.

An email had been received from a concerned resident regarding the ecological aspect of felling the tree this was discussed and the valid points noted. On financial and safety grounds it was agreed that the felling would take place. **Councillor de Giorgio-Miller** to reply to resident.

Quotes are being sought to allow the wood to be used for wood turning

Councillor Trump will take additional wood to the 24 acres and ensure it is positioned to create wood piles of benefit to wildlife so a positive outcome from the removal of our tree can be created.

10. Reach Fair

Claire Halpin McDonald has and is doing a sterling job. A letter of appreciation to be written in recognition of all her hard work and valued input. Claire has now galvanized a lot of other villagers. Should Operation London Bridge occur close to the Fair date, the Fair might need to be cancelled and a contingency sum needs to be set aside. **Councillor de Giorgio-Miller** to ask Claire to supply an amount which would be required in such circumstance.

11. LHI bid approve feasibility form

Following discussion, it was decided that the PC are happy with the proposed feasibility/costings and will leave our contribution at £2000. **Clerk** to reply to CCC.

12. January Meeting date 8th January

January 8th agreed as the date for the next meeting.

13. Information Items

14. Payments

| | |
|---------------------------------------|--------|
| Reach Village Hall – storage for 2019 | |
| Grant fund payment | £720 |
| Wildlife Trust – Date search NP. | £50.40 |

Draft Minutes of Reach Parish Council meeting held on; Wednesday 8th January 2020

Attendance

| | | |
|------------------------|---------------------|-------------|
| Alex de Giorgio-Miller | Chair | Present |
| Charlotte Cane | Vice Chair | Not Present |
| Diana Ward | Councillor | Present |
| Andrew Trump | Councillor | Present |
| David McMillan | Councillor | Present |
| Rebecca Fordham | Councillor | Present |
| Susan Bailey | Clerk | Present |
| John Trapp | District Councillor | Not Present |
| Joshua Schumann | County Councillor | Present |

1. Declaration of Interests

There were none.

Forum for members of the public.

There were none.

2. Planning Applications

There were none.

3. County Councillor Report

Work has started on the CCC headquarters, and it has been confirmed that public access will be encouraged by the new owners of the old Shire Hall building and Castle Mound area.

CCC have not yet received had firm commitment from central Government regarding the amount of funding for the next financial year. However, CCC can confirm that the £4million for highways improvements will be forthcoming.

A complaint has been received regarding the Fen road leading out of the village. Councillor Schumann will be meeting highways on site before in the coming month.

CCC adult social care benefits are better than others in the local area, an online survey as to whether CCC should align with the local average.

Swaffham Prior Community Heat Project has been awarded £200,000+ from central Government allowing the project to proceed.

4. District Councillor Report

Operations Services Committee in November reviewed the accounts for East Cambs Street Scene Ltd, a subsidiary of the District Council. They noted that although the accounts had been signed off by the Directors, there appeared to be errors. The Senior Accountant could not explain these errors. A motion was proposed and seconded that the accounts should be brought back to Committee with a relevant Director in attendance to take the Committee through the accounts. However, the majority of the Committee voted against this motion and instead noted the accounts. Charlotte raised this with the Council's auditor at the subsequent Finance and Assets Committee meeting and the auditor had not been informed that the Accounts for East Cambs Street Scene had errors (these accounts are audited by a separate firm of accountants). Revised accounts have not yet been provided to Councillors or to Companies House.

As John reported in December, the ECDC accounts have not yet been audited. However, the auditors have noted several changes to the published accounts. Whilst some of these are simply due to more up-to-date information now being available, eg for the pension's deficit valuation, others are of more concern. The Committee asked for full explanations of how the errors had arisen to be provided to our next meeting.

The Finance & Assets Committee reviewed the ECTC accounts. Charlotte questioned the statement that a Director was in a defined benefit pension scheme and was told this was probably an error. She noted that the same statement had been in the previous year's accounts and asked for urgent clarification, as this could be a significant financial risk for the company of the statement was correct. Charlotte expressed surprise that the accounts had been signed by the Directors in July but not by the auditors until September and asked what work the Directors had done to satisfy themselves that the various estimates in the accounts remained reasonable at the date the auditors signed the accounts.

There are further meetings of Operational Committee and Finance & Assets Committee at the end of January, when hopefully all these accounting issues will be resolved and we will have a clear view of the finances of the Council and its two trading companies.

The bus services review working party has met twice. We will shortly be issuing a consultation questionnaire for residents to give us their views on local bus, cycling and walking routes.

5. Minutes of previous Meeting

Approved as correct.

6.1 Neighbourhood Plan

Consultancy Tasks - On 16 December the Group tasked Alison Farmer to undertake a landscape appraisal in support of the Plan. Members of the Group, including Ian Poole, our town planning consultant, and a few Reach residents had a productive and wide-ranging discussion with Alison on the way in which the landscape of our neighbourhood should and would influence our Plan. This was followed by a walkabout. We expect some preliminary findings from Alison at the end of January.

On 2 January the Group met with Jimmy Lu and Hoorieh Morshedi of AECOM to initiate a design code for the Plan. The design code will articulate principles to ensure that new development and refurbishment of existing buildings in Reach reflect local identity, reinforce the sense of pride we have in our village and work well for villagers' needs now and into the future. The Group gave a comprehensive brief on:

- why the built environment of Reach is as it is
- what, on the basis of our engagement with villagers to date, is most liked and valued in Reach's buildings and layout
- other strands of our work, including the landscape appraisal and the residents' survey, which will dovetail with the design code in the overall Plan.

The briefing was followed by a short walkabout in the centre of the village. We expect, for our approval, a summary of the key objectives of the tasking from Jimmy within the next week or so. The full design code will be delivered in about three months time.

Residents' Survey - We asked a new resident to Reach to complete the survey in final draft form (a copy of which is attached) and to comment on the time taken and ease of completion. Her response was very positive (Generally accessible and taking about 20 minutes to complete). The proof of the survey is now with Burwell Print and we await a confirmation of a date for completion of printing but anticipate undertaking the survey in mid to late January once we have sent out preparatory communications to villagers.

Overview - All in all we should have plenty of policy proposals and hopefully, a draft Plan to offer up to the village for comment over the Reach Fair weekend.

6.2 Reach Grant Fund

Nothing to report.

6.3 Finance

Nothing to report.

6.4 Parish Council Members

No comments

6.5 Play Spaces

Nothing to report.

6.6 Rights of Way

The byways around Reach Wood are in a poor state. The PC will monitor the situation.

6.7 24Acres Committee

The planning application for the cricket pavilion has been submitted.

7. Prospects trust Bus shelter

The Prospects Trust have reported to the PC that someone had to swerve to avoid a child in the road outside their site, hitting the bus shelter as they swerved and knocking it out of its right-side base. The farm team at Prospects Trust have repaired this. The PC are grateful for this.

It has previously been raised that there is an issue with vehicles speeding outside the entrance. The PC cannot currently see a viable solution to this but understands that it has been reported to the Neighbourhood Plan group.

The PC have also been informed that the planning department at ECDC wrote to the Prospects Trust to inform them that they did not have the correct planning permission in place to site the advertisement boards on both sides of the bus shelter. They were told that they had to take them down or apply for permission within 2 weeks. After looking at the costs for the application it was decided to take them down and re-site on the wall of their shop. A letter was sent to ECDC confirming they had carried out their wishes, along with a picture of some very sad Co-workers (adults with additional needs) taking them down. ECDC have since advised that as Reach PC own the shelter and would be able to apply for permission at a 50% discount.

The Prospects Trust have asked whether the PC would be agreeable to having new signs on the bus shelter, naming the bus shelter as "The Prospects Trust at Snakehall Farm Bus Shelter" in the same size as the previous advertisements with the same logo and colour scheme. A number of Co-workers arrive by public transport and taxis and some have pictorial aids (which is a picture of the bus shelter) to show drivers where they want to be dropped off. A clear sign instead of the advertisements would work equally as well for this purpose. The PC were shocked by this decision by ECDC, and fully support the new signs and the naming of the bus shelter. **Councillor de Giorgio-Miller** to contact Prospects Trust.

8. Tree works

A resident had informed the PC that the willow tree on the Hythe has a large branch which is leaning into the lode and trailing in the water, over their boundary. Unfortunately the PC do not have the budget for this tree work but will look to

include it in any future work on the Hythe, for which grants may be sought. The resident can remove the branches overhanging their property at their expense should they wish.

The resident has also arranged for a tree surgeon to cut back the trees which are growing over the route of the footpath by their house and making it less accessible; and to cut the broken branches which have fallen across the footpath, leaning on and damaging the conifer hedge. The tree surgeon will heap the branches from this exercise within the piece of woodland in 'ecology' heaps. The PC notes this.

9. Horse chestnut tree on the green

Additional quotes had been obtained. **Clerk** to clarify and appoint contractor. On obtaining a date, to inform the villagers who wish to use the wood to produce bowls/plates etc for sale to villagers. The PC take no responsibility for the wood turning project.

10. Metal detecting on the Green

A complaint had been received regarding the metal detecting on the village green. The villager felt that it should not have been allowed and that the holes being dug were unnecessarily large looking for a recently lost ring. The PC had anticipated that the metal detecting would be for one afternoon and only small amounts of turf and soil would be disturbed but had not clarified this when permission had been sought. **Clerk** to contact the villagers concerned, to inform them that no more metal detecting or digging should take place until clarity on the scope of the project had been sought.

11. Operation London Bridge

Prior to the meeting the Clerk had discussed with Vicar Revd Dr Eleanor Williams, the procedure put in place regarding operation London Bridge. The PC thank the Church and will support the Church in this matter. Any events happening within the 10 days of mourning will be reviewed at the time.

12. Precept increase

The precept for YE 2021 will increase by 35%.

For several years Reach Parish Councils expenses have been increasing, exceptional items have required payment and new regulations have required additional work, equipment and costs. Reach is lucky enough to have a lot of green space and a large number of trees, these however require an increasing amount of upkeep due to their age.

These expenses must be shared amongst a small number of homes and the PC is constantly trying to do too much with too little usable income.

Thus the PC needs to set aside reserves for future payments for identifiable items, such as tree works, legal fees, elections, etc to avoid large amounts of funds having to be taken from a single year's income or depleting the reserves to an unsustainable amount.

This increase will give the PC an additional £2,852.50 of funds which will allow the PC to set aside monies for future expenditure and leave the village in a more stable position.

13. Climate and ecological emergency

Climate change is the biggest threat we're facing, and we all need to take action. Expert opinion is that we have until 2030 to reduce carbon emissions significantly if we're to avoid global temperatures from rising above 1.5°C.

Reach Parish Council declare a Climate Emergency. The actions the PC will take will be considered at future meetings. The PC supports the Local Electricity Bill and will encourage the formation of a Climate Action Group in Reach.

14. Support for Local Electricity Bill

The Bill, if made law, would empower local communities to sell locally generated clean energy directly to local customers by establishing a statutory Right to Local Supply. This is currently impossible because of the huge setup and running costs involved in doing so.

The ultimate result of this would be:

1. Local communities and businesses could buy their electricity from a local energy company.
2. Building more local renewable energy would be financially viable.
3. Communities would benefit from the revenues that new local energy supply companies would generate, such as more local skilled jobs, energy efficiency schemes and investment in local facilities.

Following discussion, the PC agreed to support this bill. **Clerk** to write to the organisers expressing support.

15. Clerk's pay and conditions of service

The Parish Council agreed the standard pay increase as per the budget and thanked the Clerk for her work. It was agreed that a remuneration committee of Councillors Ward and Trump would review the Clerk's contract.

16. Information Items

There were none.

17. Payments

| | |
|--|----------|
| S Bailey – Clerk salary | £1002.30 |
| D McMillan - renewal of Domain for email address | £38.38 |
| Eon – power on the green | £9.93 |
| Cricket pavilion planning – Cricket club restricted reserves | £256 |
| C Dunnett – cemetery tap | £71.98 |

Diary Dates

| February | Event | Location | Time |
|-------------------|----------------------------|---------------------|---------------|
| Wednesday 5 | Parish Council Meeting | Village Hall | 7.45pm |
| Thursday 6 | Recycling Day (Blue) | | |
| Thursday 13 | Recycling Day (Green) | | |
| Friday 14 | Mobile Library – Route C12 | Village Hall | 2.20pm |
| Tuesday 18 | Reach Fair Meeting | Village Hall | 8.00pm |
| Thursday 20 | Recycling Day (Blue) | | |
| Thursday 27 | Recycling Day (Green) | | |

| March | Event | Location | Time |
|-------------------|----------------------------|---------------------|---------------|
| Wednesday 4 | Parish Council Meeting | Village Hall | 7.45pm |
| Thursday 5 | Recycling Day (Blue) | | |
| Thursday 12 | Recycling Day (Green) | | |
| Friday 13 | Mobile Library – Route C12 | Village Green | 2.20pm |
| Tuesday 18 | Reach Fair Meeting | Village Hall | 8.00pm |
| Thursday 19 | Recycling Day (Blue) | | |
| Thursday 26 | Recycling Day (Green) | | |

Church Services in Burwell and in Reach

| February 2020 | St Mary's Burwell | St Etheldreda's Reach |
|--|--|--------------------------------------|
| Sunday February 2nd Presentation in the Temple | 8.00 am Holy Communion 10.00 All Age Communion | |
| Wednesday 5 th | 10.00am Holy Communion 11.00am Holy Communion at Ash Grove | |
| Thursday 6 th | | 8.15 am Morning Prayer |
| Sunday 9th 3rd Before Lent | 10.00am Holy Communion 7.00pm Sunday @ 7 | 8.00am Holy Communion |
| Wednesday 12 th | 10.00am Holy Communion | |
| Thursday 13 th | | 8.15am Morning Prayer |
| Sunday 16th 2nd Before Lent | 8.00 am Holy Communion 10.00am Holy Communion | |
| Wednesday 19 th | 10.30am Holy Communion at Ness Court | |
| Thursday 20 th | | 8.15am Morning Prayer |
| Sunday 23rd Sunday Before Lent | 8.00am Holy Communion 10.00am All Age Service with Baptism 4.00pm Messy Church | |
| Wednesday 26th Ash Wednesday | 10.00am Holy Communion 7.00pm Holy Communion | |
| Thursday 27 th | | 8.15am Morning Prayer |
| March 2020 | St Mary's Burwell | St Etheldreda's Reach |
| Sunday 1st Lent 1 | 8.00am Holy Communion 10.00am Holy Communion | |
| Wednesday 4 th | 10.00am Holy Communion 11.00am Holy Communion at Ash Grove | |
| Thursday 5 th | | 8.15am Morning Prayer |
| Sunday 8th Lent 2 | 10.00am Holy Communion 7.00pm Sunday @ 7 | 8.00am Holy Communion |
| Wednesday 11 th | 10.00am Holy Communion | |
| Thursday 12 th | | 8.15am Morning Prayer |
| Sunday 15th Lent 3 | 8.00am Holy Communion 10.00 am Holy Communion | |
| Wednesday 18 th | 10.30am Holy Communion at Ness Court | |
| Thursday 19 th | | 8.15am Morning Prayer |
| Sunday 22nd Lent 4 Mothering Sunday | 8.00am Holy Communion 10.00am All Age Service | |
| Wednesday 25 th | 10.00am Holy Communion | |
| Thursday 26 th | | 8.15am Morning Prayer |
| Sunday 29th Lent 5 Passiontide begins | 8.00am Holy Communion | 10.00am All Age Service with Baptism |

Bus Timetable

Reach is served by the Stagecoach number 11 bus service - summary of all buses serving Reach is shown below.

Please note that there is no bus service at all on Sundays

| Cambridge to Bury - Monday to Friday (excluding Bank Holidays) | | | | |
|--|-------|----------------------|--------------------------|---------------------|
| Cambridge Drummer Street | Reach | Burwell Ness Road | Newmarket Bus Station | Bury Bus Station |
| 06:50 | 07:35 | 07:45 | 08:17* | 08:49 |
| 07:50 | 08:35 | 08:45 | 09:17* | 09:49 |
| 09:50 | 10:35 | 10:45 | 11:17* | 11:49 |
| 11:50 | 12:35 | 12:45 | 13:17* | 13:49 |
| 13:50 | 14:35 | 14:45 | 15:17* | 15:49 |
| 15:50 | 16:42 | 16:45 | 17:24 | 17:55 |
| 18:15 | 19:00 | 19:10 | | |
| 19:15 | 20:00 | 20:10 | | |

| Cambridge to Bury - Saturdays (excluding Bank Holidays) | | | | |
|---|-------|----------------------|--------------------------|---------------------|
| Cambridge Drummer Street | Reach | Burwell Ness Road | Newmarket Bus Station | Bury Bus Station |
| 06:50 | 07:35 | 07:45 | 08:17* | |
| 07:50 | 08:35 | 08:45 | 09:17* | 09:49 |
| 09:50 | 10:35 | 10:45 | 11:17* | 11:49 |
| 11:50 | 12:35 | 12:45 | 13:17* | 13:49 |
| 13:50 | 14:35 | 14:45 | 15:17* | 15:49 |
| 15:50 | 16:35 | 16:52 | 17:17 | 17:55 |
| 18:15 | 19:00 | 19:10 | | |
| 19:15 | 20:00 | 20:10 | | |

| Bury to Cambridge - Monday to Friday (excluding Bank Holidays) | | | | |
|--|--------------------------|----------------------|-------|-----------------------------|
| Bury Bus Station | Newmarket Bus Station | Burwell Ness Road | Reach | Cambridge Drummer Street |
| | | 06:14 | 06:29 | 07:22 |
| | | 06:39 | 06:54 | 07:50 |
| | 08:40 | 09:08 | 09:23 | 10:13 |
| 10:05 | 10:35* | 11:08 | 11:23 | 12:13 |
| 12:05 | 12:35* | 13:08 | 13:23 | 14:13 |
| 14:05 | 14:35* | 15:08 | 15:23 | 16:13 |
| 15:05 | 15:35* | 16:08 | 16:23 | 17:13 |
| 16:05 | 16:35* | 17:08 | 17:23 | 18:13 |
| 17:05 | 17:35* | 18:08 | 18:23 | 19:13 |

| Bury to Cambridge - Saturdays (excluding Bank Holidays) | | | | |
|---|--------------------------|----------------------|-------|-----------------------------|
| Bury Bus Station | Newmarket Bus Station | Burwell Ness Road | Reach | Cambridge Drummer Street |
| | | 06:19 | 06:34 | 07:22 |
| | | 06:49 | 07:04 | 08:00 |
| | 08:40 | 09:08 | 09:23 | 10:13 |
| 10:05 | 10:40* | 11:08 | 11:23 | 12:13 |
| 12:05 | 12:40* | 13:08 | 13:23 | 14:13 |
| 14:05 | 14:40* | 15:08 | 15:23 | 16:13 |
| 15:05 | 15:40* | 16:08 | 16:23 | 17:13 |
| 16:05 | 16:40* | 17:08 | 17:23 | 18:13 |
| 17:05 | 17:40* | 18:08 | 18:23 | 19:13 |

* These are departure times - buses will arrive approximately 5 minutes earlier

A full timetable can be downloaded from www.reach-village.co.uk/bus_service.html

Then and Now (see opposite page for pictures)

Little Lane in 1960 looking towards 'White Roses', it was a little less overgrown at that time and well used by the village. The house to the left was known as 'Triple One' back then, clearly having been created from three cottages knocked into one. Len and Gwen Warren lived there, Len being well known as the self-proclaimed 'King of Reach'. During the school holidays Gwen would loosely monitor the activities of a dozen or so village children whilst their parents were working, a constant cauldron of stew on the kitchen Rayburn being the only insurance they would return at the prescribed feeding time.

Chris Patterson

Contact Information

| | | | |
|--|-------------------------------------|--|---------------|
| Parish Council – see “Know Your Parish Council” | | | |
| Village Centre | | | |
| | Chair | Grahame Radford | 01638 742814 |
| | Finance | Andrew Trump | 01638 743335 |
| | Bookings | Grahame Radford | 01638 742814 |
| Marquee Bookings | | Andrew Hall | 01638 743737 |
| Church | | | |
| | Vicar | Eleanor Williams | 01638 741262 |
| | Curate (duty days Wed, Fri and Sun) | Reverend Paula Spalding | 07545 868549 |
| | Priest in Retirement | Reverend David King | 01638 742924 |
| | Parochial Church Council Member | Pam King | 01638 742924 |
| | Churchwarden | Dr Stephen Martin | 01638 611235 |
| | Churchwarden at Burwell/Reach | Sarah Wingate | 01638 742498 |
| Emergencies | | | |
| | Electricity (Eastern Electric) | | 0800 783 8838 |
| | Police (Emergency/Non-Emergency) | | 999/101 |
| | Water (Anglian Water) | | 08457 145145 |
| Doctors, Burwell | | | |
| | Appointments and Emergencies | | 01638 741234 |
| | Enquiries | | 01638 743602 |
| | Community Nurses | | 01638 742382 |
| | Surgery Hours | Mon 8.30am to 6.00pm with extended hours on a Monday please phone the surgery for details | |